

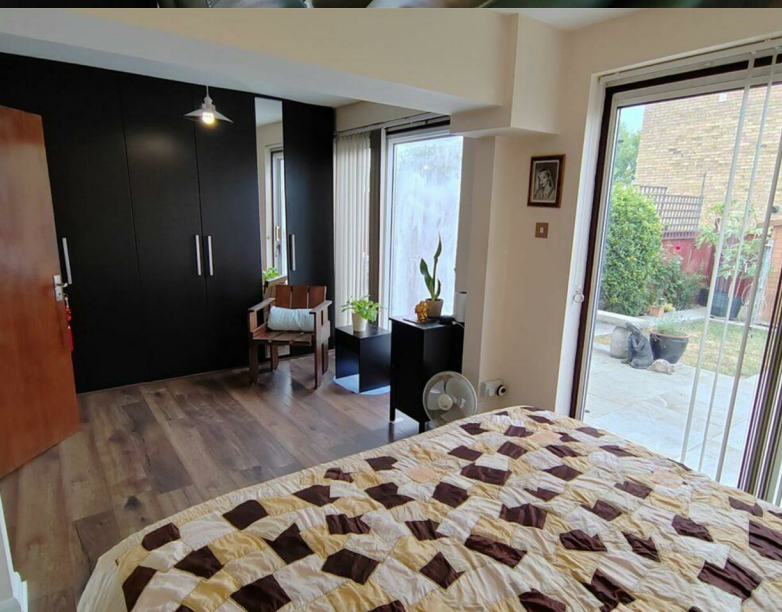
The Leadings, Wembley, HA9 9DT

Asking Price £750,000

Subject to Contract

- Four bedrooms
- Off street parking & garage
- Freehold

- Three bathrooms
- Private rear garden



The Leadings, HA9 9DT

We are delighted to present this impressive four-bedroom, three-storey end-of-terrace townhouse in the highly sought-after Wembley Park area of North-West London. Offering generous room sizes and a bright, spacious layout, the property features a large reception and dining area, a modern fitted kitchen, a family bathroom, a cloakroom, and a convenient ground-floor en-suite. Additional benefits include a private balcony, a rear garden, ample storage, a garage, and off-street parking for two vehicles.

Located within The Leadings, this home enjoys close proximity to supermarkets, bars, and restaurants, as well as Wembley Park's excellent 24-hour transport links, making it an ideal choice for both families and commuters.



Approximate Gross Internal Area: 1549 ft² ... 143.9 m² (excluding driveway, garden, balcony)

This plan is for illustrative purposes only and should be used as such by prospective purchasers/renters. All measurements of doors, windows, room size and other items are approximate and should be taken as such, no responsibility is taken for any errors, omission, or misstatement. Any appliances, systems or services shown have not been tested, therefore there is no guarantee as to their functionality and their efficiency.

Tenure Freehold

Price Asking Price £750,000 Subject to Contract

Viewing by appointment , through joint sole agents Warwick Estate Agents